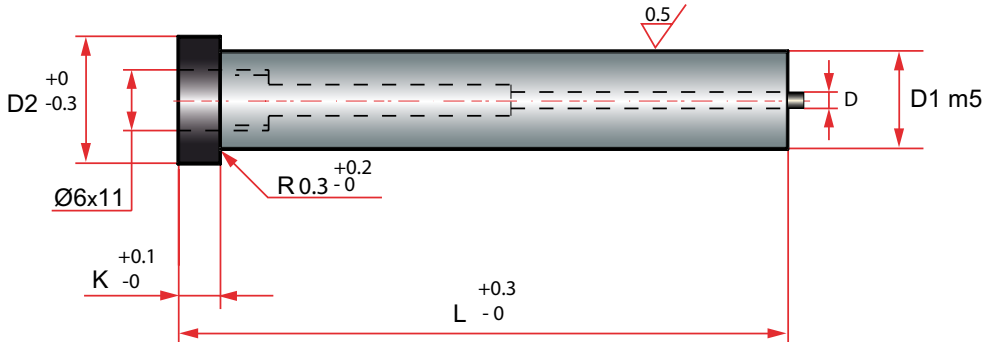


Punch ISO 8020  
Punzón ISO 8020



Material	Hardness	
	Body	Head
HWS (12% Cr)	62 ± 2 HRC	50 ± 5 HRC
HSS	64 ± 2 HRC	50 ± 5 HRC

D1	D2	K	D	L						
				71	80	90	100	110	120	130
10,0	13,0	5,0	1,5	*	*	*	*	*	*	*
13,0	16,0			*	*	*	*	*	*	*
16,0	19,0		2,3	*	*	*	*	*	*	*
20,0	23,0			*	*	*	*	*	*	*
25,0	28,0			*	*	*	*	*	*	*
32	35		3,1	*	*	*	*	*	*	*

How to order: SPJB/Mat.D1 x L  
Forma de pedido: SPJB/Mat.D1 x L